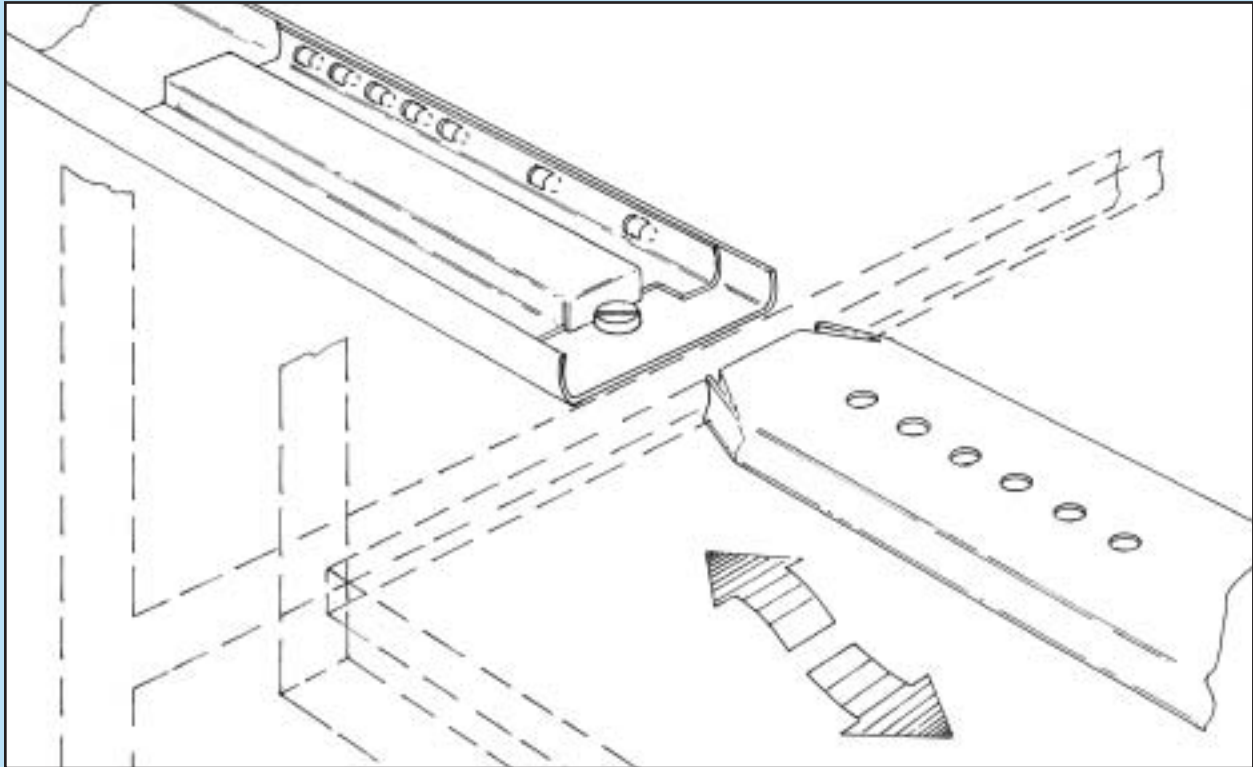


FRICION DISCONNECT INSTRUCTIONS

MODEL 1029

A single slide is mounted flat underneath the drawer.



To Remove Drawer

- Fully open the drawer.
- Take hold of the drawer sides.
- Pull firmly forward through the friction resistance (a jerking-forward motion helps to remove the drawer).

To Reinsert Drawer

- Move the ball bearing retainer in the cabinet member slide fully forward.
- Carefully insert the drawer member into the cabinet member ball retainer (make sure slide members are parallel).
- Close the drawer and then reopen to fully engage slide into the ball bearing track.