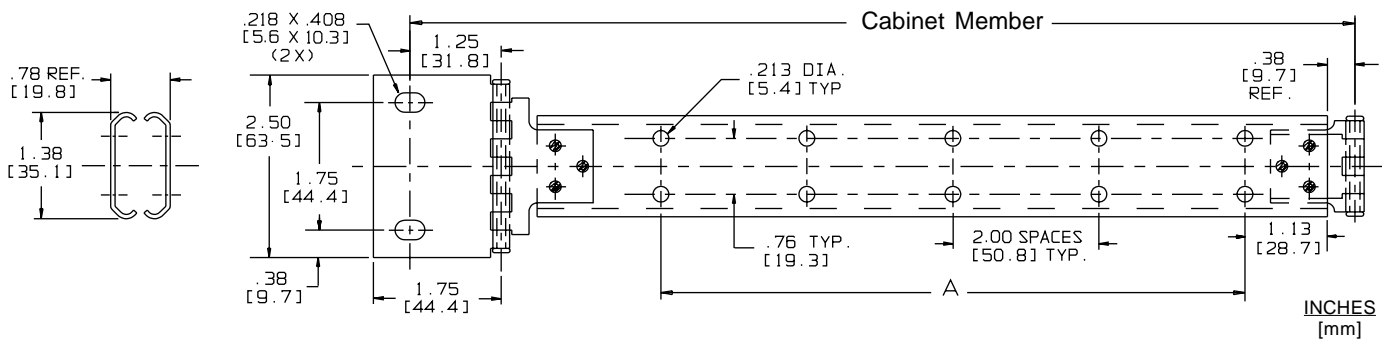
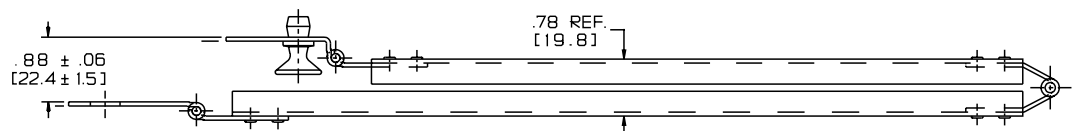
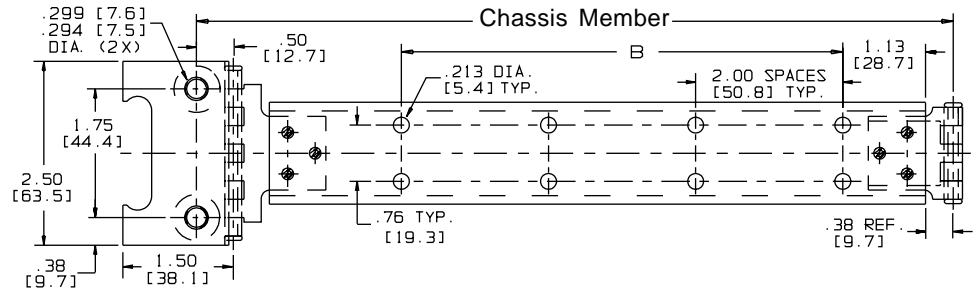
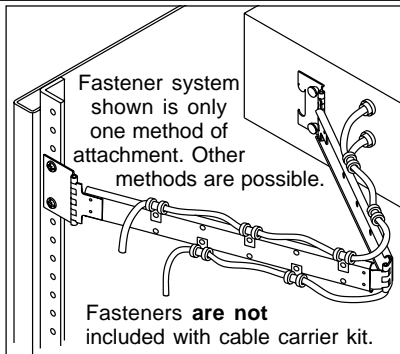


**APPLICATIONS:** Electronic equipment mounted to moveable chassis. Use Model CC9 whenever cable management is required for bundle wire.

Cable Carrier  
With Quick Disconnect



INCHES  
[mm]

### Installation Instructions

1. Install chassis into EIA rack.
2. Fasten rear cable carrier brackets with #10 X 32 screws (customer supplied) to EIA rack. For adjustment purposes screw the back brackets on loosely.
3. Locate the front cable carrier bracket at the back of the chassis and parallel to rear bracket. Drill two 5/16" (.313") holes in chassis and attach cable carrier bracket with "quick disconnect" fasteners. Fasteners will withstand 100 lbs. [45.5 kg.] of tension load and 250 lbs. [113.4 kg.] in shear.  
**Note:** PUSH knobs to connect; PULL knobs to disconnect.
4. Check cable carrier alignment by opening and closing the chassis. Adjust position until movement is smooth.
5. Tighten screws and attach cable to complete installation.

### Packaging

**Distributor (D) Pack:** Both lengths are packaged 10 each per box. Polybag includes one cable carrier and installation sheet.

**Bulk Pack:** Both lengths are packaged 15 each per box.

### Specifications

Cable Carrier Members: Cold rolled steel  
Cable Carrier Finish: Bright electro-zinc plating

**NOTE:** Specifications, materials, prices, terms, and delivery are subject to change without notice.

Copyright © 2001 Accuride International Inc. Printed in U.S.A. 3700-9045(9225)-MK544-R3-1100

### Ordering Instructions

To order cable carrier CC9 specify the following:

Total Quantity Required 10 Each    CC9    -1    -C    D  
Cable Carrier Model Number \_\_\_\_\_  
Cable Carrier Length (See chart) \_\_\_\_\_  
Cable Carrier Finish (Electro-zinc plating) \_\_\_\_\_  
Optional Polybag Packaging \_\_\_\_\_

Model	Extension	Cabinet Member	Chassis Member	Number of Spaces "A"	Number of Spaces "B"
CC9-1	23.00 [584.2]	14.28 [362.7]	11.63 [295.4]	4	3
CC9-2	29.00 [736.6]	16.75 [425.5]	14.13 [358.9]	6	5