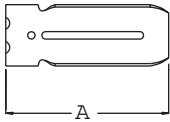


RACK MOUNTING BRACKETS

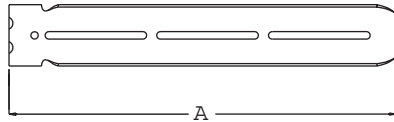
Model Numbers	A	A	B	B	B	C	D	E	F
	Short	Long	4 Hole	3 Hole	2 Hole				
201, 204A-LR, 301	4.51 [114.6]	11.01 [279.7]	2.50 [63.5]	1.65 [41.9]	1.51 [38.4]	.72 [18.3]	.29 [7.4]	.66 [18.8]	.60 [15.2]
305A-LR	4.31 [109.5]	10.81 [274.6]	2.50 [63.5]	1.65 [41.9]	1.51 [38.4]	.78 [19.8]	.29 [7.4]	.72 [18.3]	.60 [15.2]
3301, 3307, 3308	4.51 [114.6]	11.01 [279.7]	2.50 [63.5]	1.75 [44.5]	1.75 [44.5]	.72 [18.3]	.29 [7.4]	.55 [14.0]	.60 [15.2]
3601, 3607	4.74 [120.4]	11.00 [279.4]	2.50 [63.5]			.72 [18.3]	.29 [7.4]	.51 [13.0]	.60 [15.2]

- See Rack Mounting Accessory Selection Guide on page 8 for ordering part numbers.
- Brackets shown below are for Models 201/204A LR/301 and are shown for representation only.

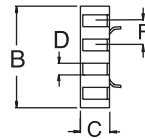
Short Bracket



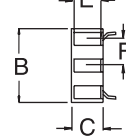
Long Bracket



4 Hole



3 Hole



2 Hole

