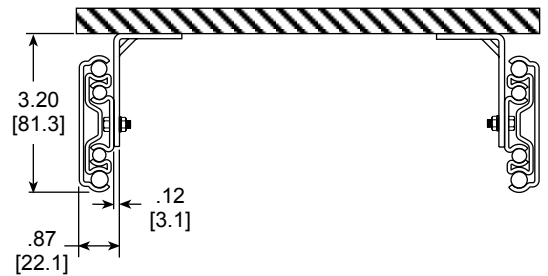
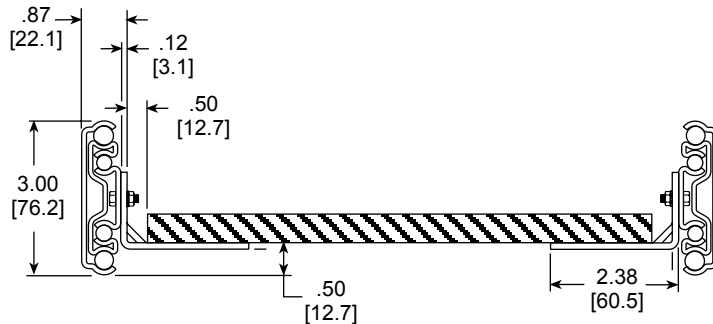


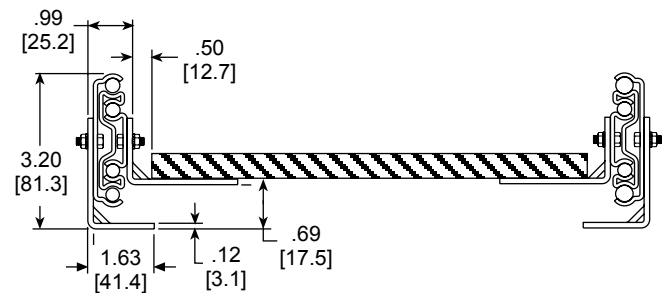
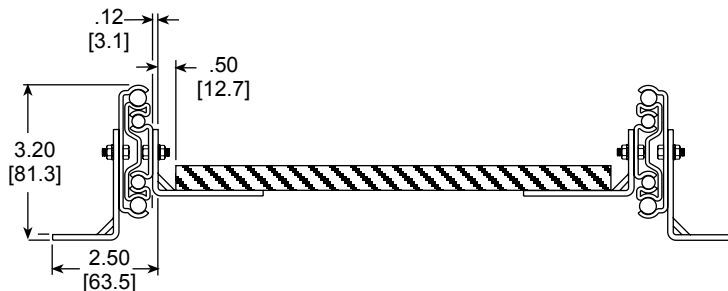
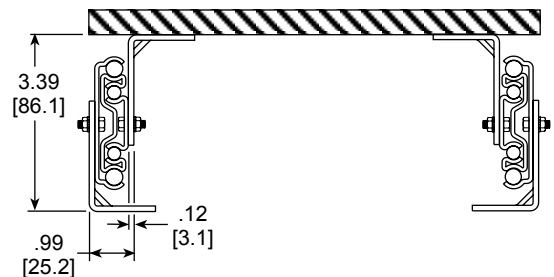
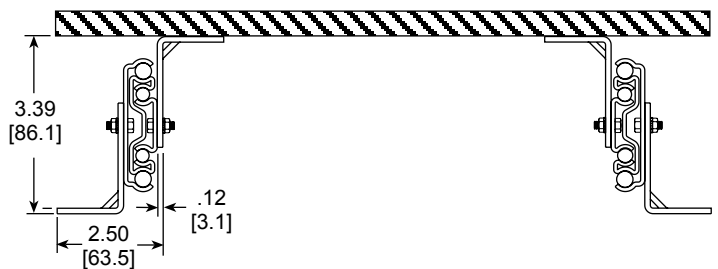
APPLICATIONS: Used to install platform-mounted pantry pullouts, shelving units, or storage trays for tools, luggage, and equipment.

Facilitates platform mounting of models 9301, 9307, and 9308. Brackets provide 4 bottom and 2 side mount options.

Side-Mount Slide Mounts to Side of Cabinet



Bottom-Mount Bracket Mounts to Top or Bottom of Cabinet



NOTE: Dimensions shown for reference only.

inches
[mm]

Finish Bright electro-zinc (C) only

Load Rating Drawers up to 18" [457 mm] wide
500 lbs. [227 kg] per pair*
Drawers up to 42" [1067 mm] wide
350 lbs. [160 kg] per pair**

Hardware 1/4" X 5/8" [6.4 mm X 15.9 mm] hex head screw,
1/4" [6.4 mm] hex head nuts and lock washers

Features Unhanded bracket design

Bracket Lengths 12.00" [304.8 mm]
16.00" [406.4 mm]
22.00" [558.8 mm]
28.00" [711.2 mm]

Height Slide only: 3.00" [76.2 mm]
Slide and bracket depending upon bracket configuration:
3.00" [76.2 mm]
3.20" [81.3 mm]
3.39" [86.1 mm]

NOTE: Dimensions shown for reference only

The unhandled bracket allows for 6 platform mounting combinations: 4 bottom mount and 2 side mount options.

In order to minimize inventory requirements, four bracket lengths have been designed to be used either individually or in combination to accommodate all slide lengths.

Slide Lengths

12" through 32"

1 kit to side mount, 2 kits to bottom mount.

34" through 36"

2 kits (same part number) required for side mount, 4 kits (same part number) for bottom mount.

40" 42", 48", and 60"

2 kits (different part numbers) to side mount, 4 kits (2 different part numbers) to bottom mount.

To determine the number of bracket kits required for each slide length, refer to the chart at the right.

Example:

To **side** mount model C9301-48, order:

- 1 of kit part number 4180-0471-XE, and
- 1 of kit part number 4180-0474-XE.

To **bottom** mount model C9301-48, order:

- 2 of kit part number 4180-0471-XE, and
- 2 of kit part number 4180-0474-XE.

9301 Accessory Bracket Kits								
Bracket Kit Part Number	12" Bracket 4180-0471-XE		16" Bracket 4180-0472-XE		22" Bracket 4180-0473-XE		28" Bracket 4180-0474-XE	
Slide Part Number	Side Mount	Bottom Mount	Side Mount	Bottom Mount	Side Mount	Bottom Mount	Side Mount	Bottom Mount
C 9301-12	1	2						
C 9301-14	1	2						
C 9301-16			1	2				
C 9301-18			1	2				
C 9301-20			1	2				
C 9301-22					1	2		
C 9301-24					1	2		
C 9301-26					1	2		
C 9301-28							1	2
C 9301-30							1	2
C 9301-32							1	2
C 9301-34	2	4						
C 9301-36	2	4						
C 9301-40	1	2			1	2		
C 9301-42	1	2			1	2		
C 9301-48	1	2					1	2
C 9301-60					1	2	1	2

Bracket Kit Ordering Instructions

Complete your order for model 9301 accessory bracket kits by specifying the following:

Example: Kits needed for 1 pair, C9301-48, bottom mounted.

	2 Each	4180-0471-XE
	<u>2 Each</u>	<u>4180-0474-XE</u>
Total Bracket Kits Required		
Bracket Kit Part Numbers		

Packaging

Each accessory bracket kit contains hardware to mount brackets to the slides. Kit includes two brackets, four 1/4" hex head screws, four 1/4" hex head nuts, and lock washers packaged in a polybag. *Customer supplies hardware to mount brackets to base and/or platform/drawer.*

Bracket kits are packaged 4 each per box.

Specifications

Brackets: Cold rolled steel
RoHs Compliant.

Note: Specifications, materials, prices, terms, and delivery are subject to change without notice.



ACCURIDE INTERNATIONAL INC.

12311 Shoemaker Avenue
Santa Fe Springs, CA 90670
TEL (562) 903-0200
FAX (562) 903-0208
www accuride.com

Manufacturing, Engineering, and Sales
United States • Germany • Japan • Mexico • United Kingdom • China