

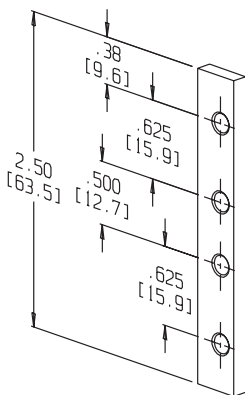
BAR NUTS

- Simplifies installation and adjustment of Accuride slides in EIA/RETMA enclosures
- Easier than individual nuts when access to the slide mounting bracket is limited
- Order four bar nuts per pair of slides

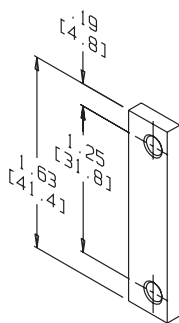
The following dimensions apply to all bar nuts:

Thickness of bar nut:	.13 [3.2]
Width of bar nut:	.38 [9.6]
Mounting holes:	#10-32 thread
Mounting holes/ center to edge:	.14 [3.6]

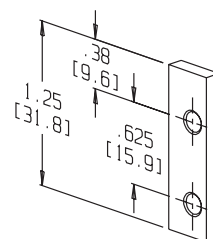
4100-0101-CE



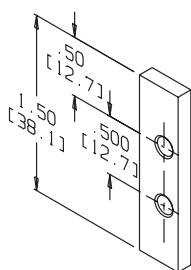
4100-0102-CE



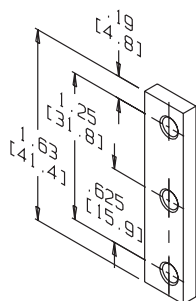
4100-0103-CE



4100-0106-CE



2430-0102-CE



4100-0108-CE

